

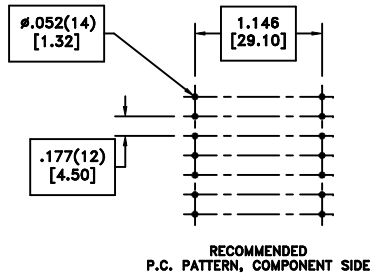
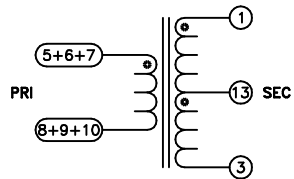
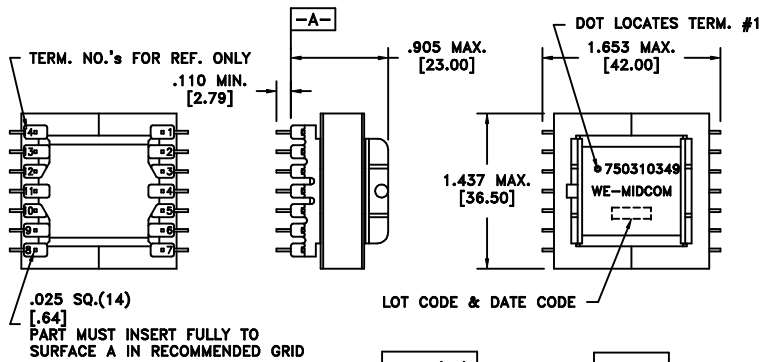
CUSTOMER TERMINAL	RoHS	LEAD(Pb)-FREE
Sn100%	Yes	Yes

more than you expect



**ELECTRICAL SPECIFICATIONS @ 25°C unless otherwise noted:**

PARAMETER	TEST CONDITIONS	VALUE
D.C. RESISTANCE	7-8 tie(5+6+7, 8+9+10), @20°C	0.010 ohms max.
D.C. RESISTANCE	1-3 @20°C	0.500 ohms max., 0.120 typ.
INDUCTANCE	7-8 tie(5+6+7, 8+9+10), 50kHz, 10mVAC, Ls	5.0uH ±10%
SATURATION CURRENT @85°C	20% rolloff from initial	25ADC
CONTINUOUS CURRENT	40°C temp rise from ambient	18A
LEAKAGE INDUCTANCE	7-8 tie(1+3, 5+6+7, 8+9+10), 100kHz, 1.0VAC, Ls	100nH max.
DIELECTRIC	PRI-SEC 1250VAC, 1 second	1000VAC, 1 minute
TURNS RATIO	(13-3):(1-13)	1:1, ±1%
TURNS RATIO	(1-3):(5-10)	10:1, ±1%
TURNS RATIO	(1-3):(6-9)	10:1, ±1%
TURNS RATIO	(1-3):(7-8)	10:1, ±1%



REV.	DATE	Packaging Specifications	CONVENTION PLACEMENT
		Method: Tray PKG-0838 www.we-online.com/midcom	
6B	8/11		
6A	2/09	SEE REVISION SHEET FOR REVISION LEVEL	

Tolerances unless otherwise specified:  
Angles: ±1°      Decimals: ±.005 [.13]  
Fractions: ±1/64      Footprint: ±.001 [.03]

This drawing is dual dimensioned. Dimensions in brackets are in millimeters.

DRAWING TITLE  
**TRANSFORMER**

eiSos p/n: 750310349

PART NO.  
**750310349**

SPECIFICATION SHEET 1 OF 1